

Not Constructed

SHEET NO. 2
 PLAN NO. 1072
 FOR THE IMPROVEMENT OF
 "J" STREET
 BETWEEN RIALTO AVENUE AND BELLEVUE STREET
 CENTRAL STREET
 BETWEEN "K" STREET AND SYCAMORE STREET
 BELLEVUE STREET
 BETWEEN "J" STREET AND "K" STREET
 SYCAMORE STREET
 BETWEEN BELLEVUE STREET AND CENTRAL STREET
 CITY OF SAN BERNARDINO
 CALIFORNIA
 JULY 1931
 A. H. LOWE
 CITY ENGR.

NOTE: All elevations shown in Red ink are in feet and one above a proposed mark is 104.5 feet below the City Bench Mark as established by Ordinance No. 283 City of San Bernardino, California.

NOTE: Expansion joints to be constructed through all cement concrete curbs and gutters at intervals of approximately 50 feet.

LEGEND

- " or 10" means inch or inches.
- or ft means foot or feet.
- ST means Street.
- El means elevation.
- No. means number.
- 3" means 3 inch.
- Cement Concrete Curb to be constructed shown on plan thus [Symbol].
- Cement Concrete Gutter to be constructed shown on plan thus [Symbol].
- Cement Concrete Sidewalk to be constructed shown on plan thus [Symbol].
- Asphalt Concrete Pavement to be constructed shown on plan thus [Symbol].
- Cement Concrete Pavement to be constructed shown on plan thus [Symbol].

GRADES

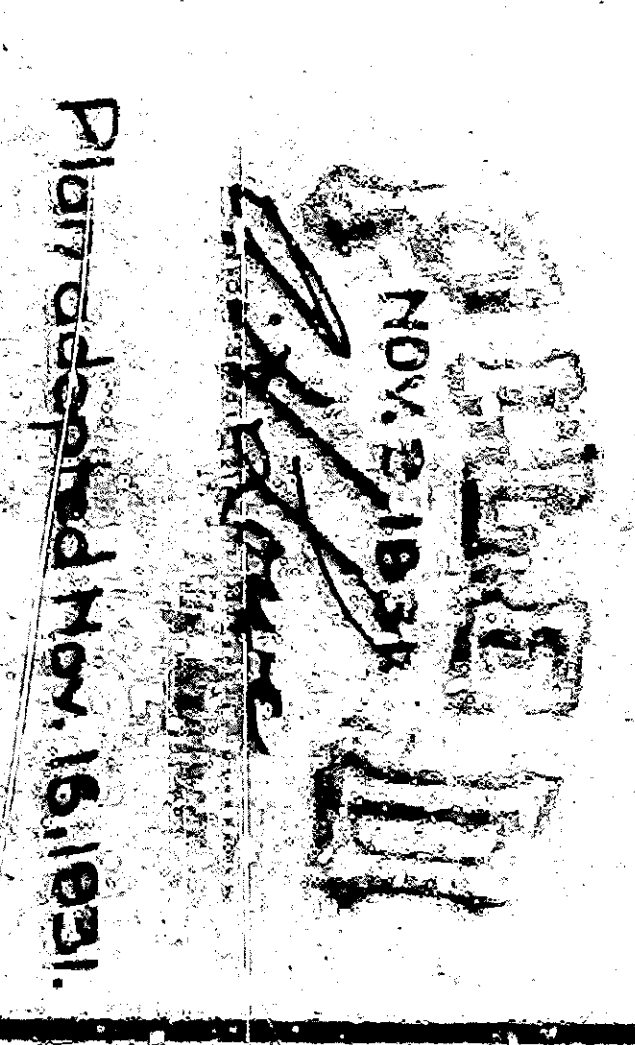
- Grade of "J" Street established by Ordinance No. 603.
- Grade of Central Street established by Ordinance No. 603.
- Grade of Bellevue Street established by Ordinance No. 603.
- Grade of Sycamore Street established by Ordinance No. 603.

STREET TITLE

"J" Street and Bellevue Street dedicated to City of San Bernardino by the Word-Git. Trust as recorded in Book 15 of Maps, of page 99, Records of San Bernardino County, Central Street dedicated by said Word-Git. Trust and by Certificate Subdivision No. E, as recorded in Book 14 of Maps, of page 357, Records of said County, Sycamore Street dedicated by said Certificate Subdivision No. E, as recorded in Book 14 of Maps, of page 357, Records of said County, Sycamore Street dedicated by said Certificate Subdivision No. E.

PROFILE LEGEND

Black lines show present approximate surface of ground.
 Red lines show proposed approximate surface of ground.
 Scale: Horizontal 1" = 40'
 Vertical 1" = 4'



Plan adopted Nov. 18, 1931.