

3' x 3' CULVERT SECTION
Scale: $\frac{3}{4} = 1$ Foot

This Type Culvert to be constructed from the West end of Intake A to point 402' West of said point.

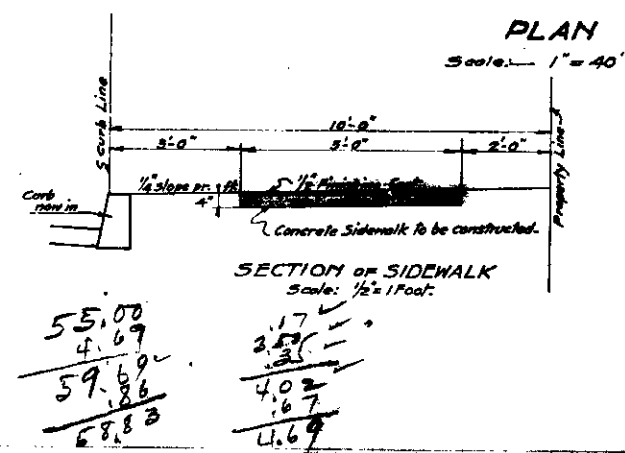
DATA

Average Area of Excavation	7' x 7.5' =	52.5 sq. ft.
Cement Concrete Mix	=	1:2:4
Area of Shell	=	9.89 sq. ft.
Concrete pr. lin. ft.	=	0.964 cu. yd.
Reinf. Bars pr. lin. ft.	=	16.59 lbs.

SHEET No. 1
PLAN No. 1260
OF
SECOND STREET STORM DRAIN
BETWEEN 'K' AND 'L' STREETS
SAN BERNARDINO
CALIFORNIA

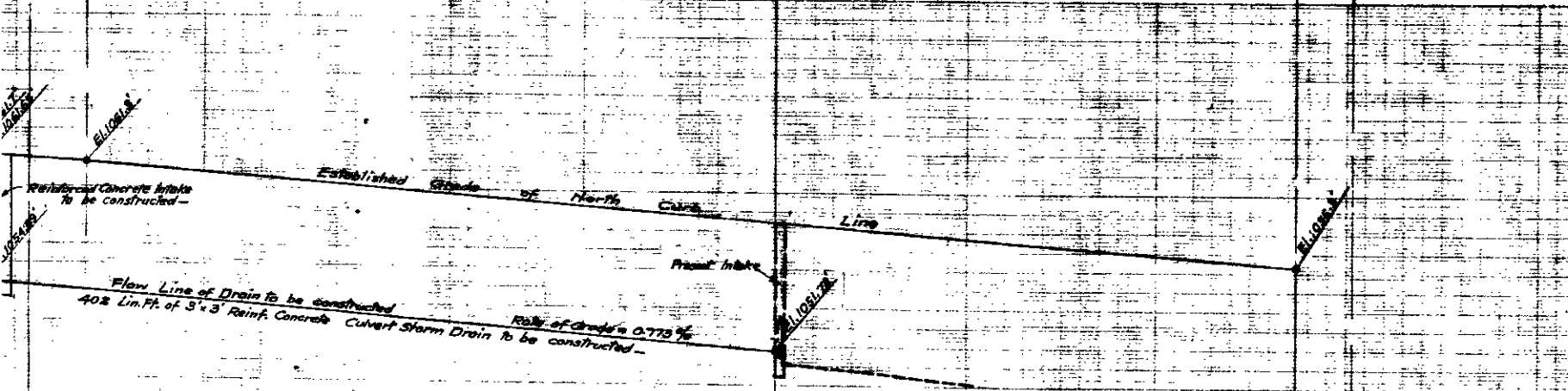
APRIL - 1937

CHARLES L. FOULKE
CITY ENGINEER

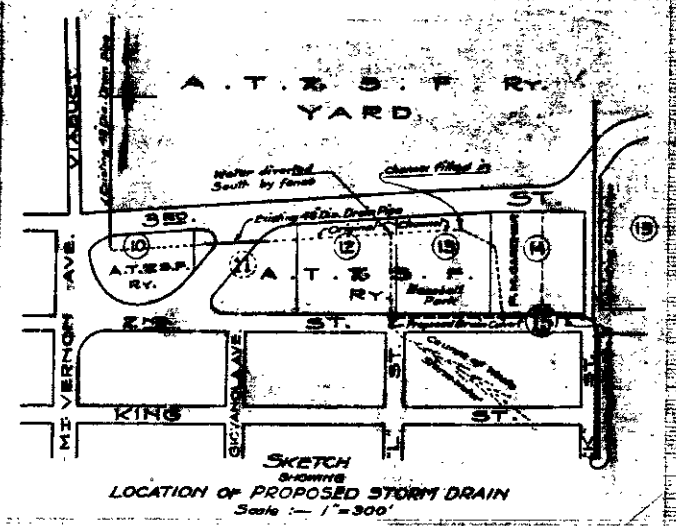


SECTION OF SIDEWALK
Scale: $\frac{1}{2} = 1$ Foot

55.00	1.17
4.69	2.57
59.69	3.74
59.69	4.02
68.83	4.67
	4.69



PROFILE
Scale: Horiz. - 1" = 40'
Vert. - 1" = 4'



SKETCH
SHOWING
LOCATION OF PROPOSED STORM DRAIN
Scale: 1" = 300'