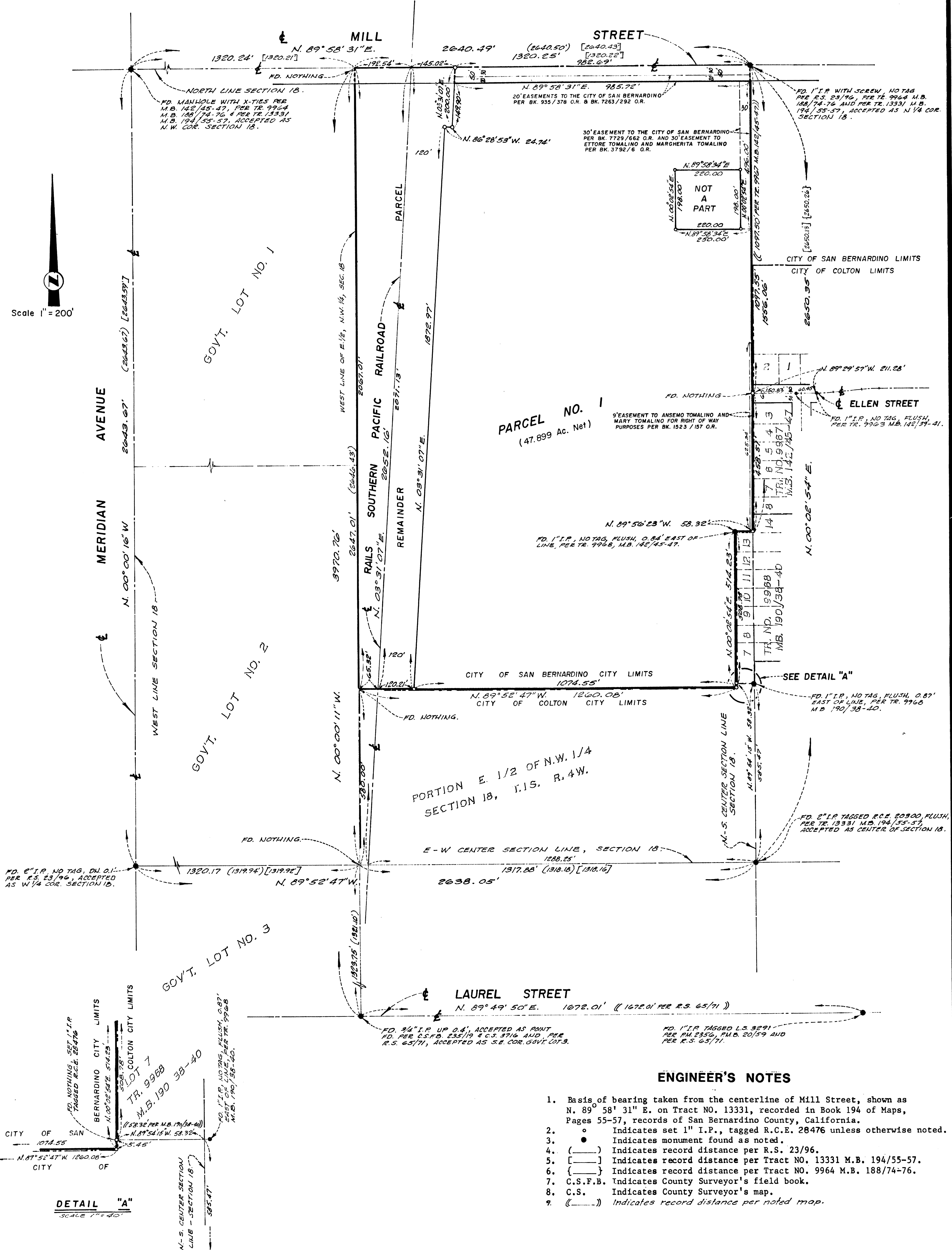


# PARCEL MAP NO. 10259

BEING A PORTION OF THE EAST ONE-HALF OF THE NORTHWEST ONE-QUARTER OF SECTION 18,  
TOWNSHIP 1 SOUTH, RANGE 4 WEST, SAN BERNARDINO BASELINE AND MERIDIAN.

DERBISH, GUERRA & ASSOCIATES, INC.

JULY, 1987



### ENGINEER'S NOTES

1. Basis of bearing taken from the centerline of Mill Street, shown as N. 89° 58' 31" E, on Tract NO. 13331, recorded in Book 194 of Maps, Pages 55-57, records of San Bernardino County, California.
2. (●) Indicates set 1" I.P., tagged R.C.E. 28476 unless otherwise noted.
3. (●) Indicates monument found as noted.
4. ( ) Indicates record distance per R.S. 23/96.
5. [ ] Indicates record distance per Tract No. 13331 M.B. 194/55-57.
6. { } Indicates record distance per Tract No. 9964 M.B. 188/74-76.
7. C.S.F.B. Indicates County Surveyor's field book.
8. C.S. Indicates County Surveyor's map.
9. (---) Indicates record distance per noted map.

DETAIL "A"  
SCALE 1" = 40'